



PCI Central Region
 IPRIECASTER
precaster
 phil@pci-central.org • 937-833-3900
 www.pcicentral.org

Issue 23

Academy of World Languages

Cincinnati, Ohio

Precast concrete use is increasing in Ohio since its approval in 2004 for the construction of elementary schools and high schools. Ideally suited to tight construction schedules, budgets and demanding design goals, precast systems with thermally efficient precast sandwich wall panels provide performance and occupant comfort that's superior to traditional cavity wall construction.

Cincinnati's new Academy of World Languages K-8 school is designed in the international style, consistent with its focus as a magnet school for foreign languages. Its fun, colorful exterior draws the eye with multiple finishes and textures, lending a welcoming, kid-friendly atmosphere.

Working with a tight deadline and budget, the design team chose a precast system from High Concrete Group LLC for the 85,500 square foot structure. High Concrete Group produced the 173 architectural precast insulated exterior wall panels. Total Precast Solutions produced the structural precast including the interior walls and Hollowcore floors. The precast concrete components were fabricated off-site and delivered in a kit of parts for immediate erection.

Overall, the high performance insulated wall panels and the entire precast system saved time, reduced cost, improved durability and enhanced aesthetics. As a result, the Academy of World Languages is set to promote learning and reduce absenteeism for the kids who attend.



An Affiliate of High Industries Inc.

(800) PRECAST
 www.highconcrete.com



(313) 962-9189
 www.psi-hci.com

"We tried to keep the design simple, sleek and high-style. It could have been built anywhere in the world and still fit in."

*Randy Merrill
 McGill Smith Punshon, Inc.*



AIA/CES Registered
Lunch & Learn Programs

www.pcicentral.org/lunch

Register for an AIA/CES Presentation in your office.



<i>Program #</i>	<i>Program Title</i>
TOPRST	Total Precast Structures
HLC07	Hollow-Core Design & Construction
PRK07	Precast/Prestressed Parking Garage Design
SUST06	Sustainable Design Using Precast (LEED)
P10107	Basics of Precast/Prestressed Concrete
DAPC02	Aesthetic Possibilities and Design Economy
APC07	Architectural Precast Concrete
SCH07	Precast Concrete Design for Schools
BRID07	Precast/Prestressed Concrete Bridge Design & Construction
IND07	Precast/Prestressed Industrial Structures
AIA Registered Precast/Prestressed Plant Tours Available	

Full listing of programs with descriptions available at
www.pcicentral.org/lunch

Any questions, please email
phil@pci-central.org or call 937-833-3900.



www.pcicentral.org/lunch

PCI Central Region Producers

ATMI - INDY, LLC

Greenfield, IN
Phone (317) 891-6280
Web: www.atmi-indy.com



CARR CONCRETE

Sidley Precast Group
/ Carr Concrete Corp.
Waverly, WV
Phone: (800) 837-8918



Castcon-Stone, Inc.
Saxonburg, PA
Phone: (724) 352-2200
Web: www.castconstone.com



Coreslab Structures (Indianapolis) Inc.
Indianapolis, IN
Phone: (317) 353-2118
Web: www.coreslab.com

deAM-RON

deAM-RON Building Systems, LLC
Owensboro, KY
Phone: (270) 684-6226
Web: www.dbsprestress.com



DBS Prestress of Ohio
Huber Heights, OH
Phone (937) 878-8232

dukane|precast

Dukane Precast, Inc.
Naperville, IL
Phone: (630) 355-8118
Web: www.dukaneprecast.com

Dukane Precast, Inc.
Aurora IL

Dukane Precast, Inc.
Plainfield IL

DURA-CRETE

Dura Crete Products
Warren, MI
Phone: (586) 759-4286
Web: www.dura-crete.net

EASTERN VAULT CO., INC.

Eastern Vault Co., Inc.
Princeton, WV
Phone: (304) 425-8955



Gate Precast Company
Winchester, KY
Phone: (859) 744-9481
Web: www.gateprecast.com

Gate Precast Company
Ashland City, TN
Phone: (615) 792-4871



Gerace Construction Company, Inc.
Midland, MI
Phone: (989) 496-2440
Web: www.geraceconstruction.com



High Concrete Group LLC
Springboro, OH
Phone: 1-800-PRECAST
Web: www.highconcrete.com

High Concrete Group LLC
Paxton, IL



Hoosier Precast
Salem, IN
Phone: (812) 883-4665



Hoosier Prestress, Inc.
Brentwood, TN
Phone: (615) 661-5198
Web: www.hoosierprestress.com

Indianapolis, IN
Phone: (317) 635-5195

Dayton, OH
Phone: (937) 264-9569



Kerkstra Precast, Inc.
Grandville, MI
Phone: (800) 434-5830
Web: www.kerkstra.com



KSA
Sciotoville, OH
Phone: (740) 776-3238
Web: www.koppers.com



Mack Industries, Inc.
Valley City, OH
Phone: (800) 482-3111
Web: www.mackconcrete.com



Mid America Precast, Inc.
Fulton, MO
Phone: (573) 642-6400
Web: www.midamericaprecast.net



Mid South Prestress, LLC
Pleasant View, TN
Phone: (615) 746-6606
Web: www.midsouthprestress.com

Hampton Inn

Pittsburgh, Pennsylvania

Using precast on the Hampton Inn stairs and landing systems with hollowcore flooring provided time and cost savings.

Castcon-Stone, Inc. had to address the hanger steel support in lieu of the suspension rods that were originally proposed. The integral landings on the precast stairs reduced the number of pieces to be erected (saving even more money). The biggest advantage with precast stairs is once in place, it is a finished product. Metal pan stairs with a similar riser count can take two men over a full day of work to assemble and then they still need to be poured with concrete.

The 90,500 sq. ft. of hollowcore manufactured and delivered by Pittsburgh Flexicore Co., Inc. allowed for increased durability, fire safety and excellent value. The installation of the hollowcore started in August and was completed in October.

“The Hampton Inn project contained two separate stair towers. Both towers fit together extremely well. Precast concrete’s flexibility in delivery times was a great help to completing the project on schedule.”

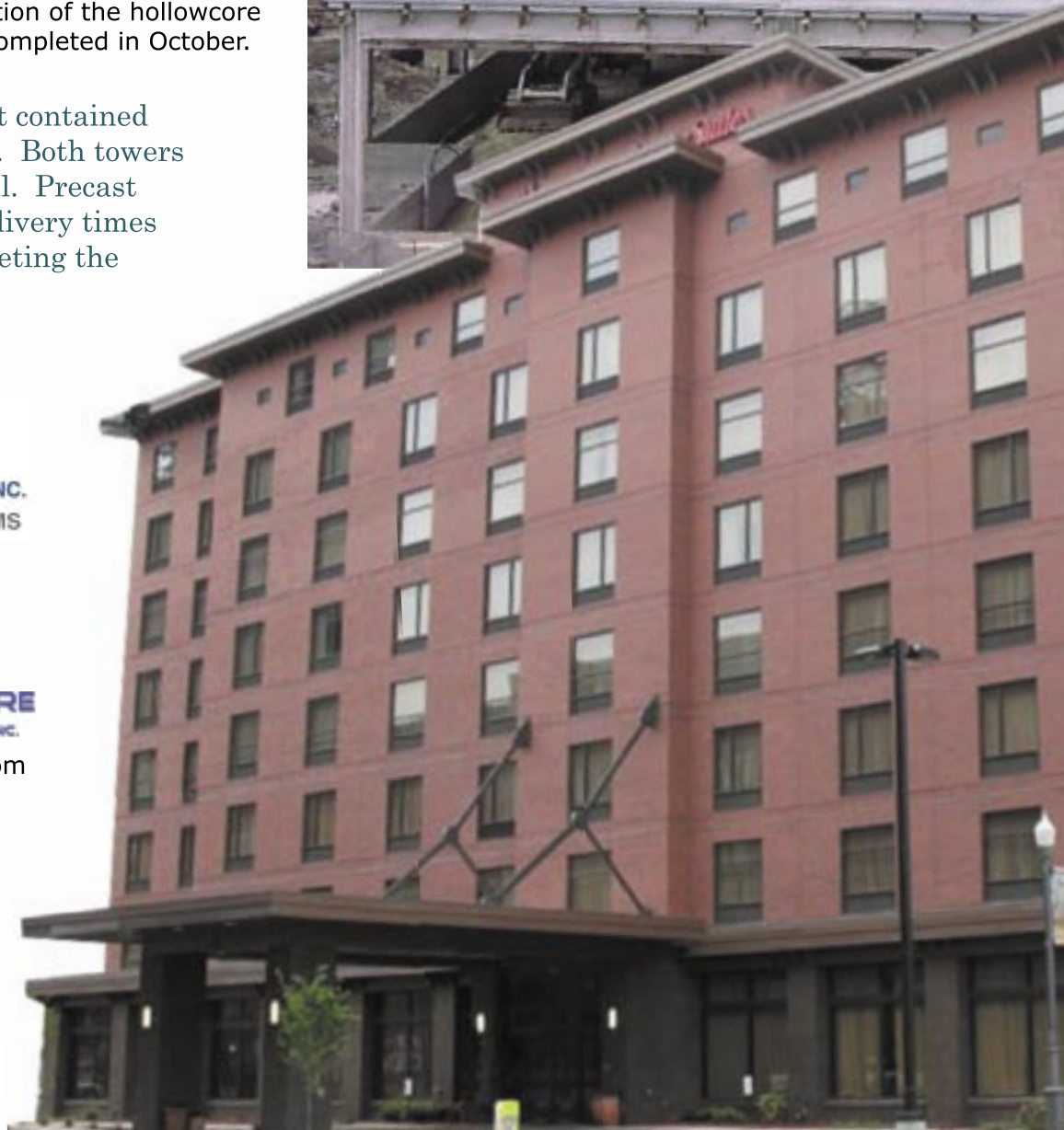
Chuck McKee, Century Steel Erectors



www.castconstone.com
(724) 352-2200



www.pittsburghflexicore.com
(724) 258-4450



Albion Bell & Clock Tower

Albion, Michigan

The Bell and Clock Tower at Abion College serves the purpose of identifying the main entrance to the Science Complex. It can be seen from a great distance on the campus and is a natural draw. The tower also serves as a timepiece with clock faces on all four sides and includes a programmable electronic chime system. The South face includes an analemma which uses the sun's rays to chart the solar equinoxes and solstices on the granite pavers at the base of the tower.

Due to site constraints, utilizing precast allowed the tower to be fabricated off site and allowed other trades to complete their work while the tower was being built. Precast concrete saved time and money over conventional block and brick veneer construction by not having to scaffold the fifty-foot structure. The precast concrete also allowed the College a convenient way to inscribe the seal of the school and the donor's name into the tower.



www.nationalprecast.com
(586) 294-6430



PCI Central Region Producers



Mid West Prestress, LLC
Wright City, MO
Phone: (636) 745-7480
Web: www.midwestprestress.com



National Precast, Inc.
Roseville, MI
Phone: (586) 294-6430
Web: www.nationalprecast.com

National Precast Structural, Inc.
Shelby Township, MI
Phone: (586) 247-1813



Pittsburgh Flexicore Company, Inc.
Monongahela, PA
Phone: (724) 258-4450
Web: www.pittsburghflexicore.com

Precast Specialties, Inc.
Monroeville, IN
Phone: (260) 623-6131
Web: www.precastspec.com



PREMARCO
Grand Rapids, MI
Phone: (800) 968-2662
Web: www.premarco.com



Prestress Services Industries, LLC
Lexington, KY
Phone: (859) 299-0461
Web: www.prestressservices.com

Prestress Services Industries, LLC
Henderson, KY
Phone: (270) 826-6244



Prestress Services Industries, LLC
Melbourne, KY
Phone: (859) 441-0068

Prestress Services Industries, LLC
Grove City, OH
Phone: (614) 871-2900

Prestress Services Industries, LLC
Decatur, IN
Phone: (260) 724-7117

Prestress Services Industries TN, LLC
Memphis, TN
Phone: (901) 775-9880



Prestressed Systems Inc.
Windsor, Ontario
Phone: (519) 737-1216
Web: www.psi-hci.com



International Precast Solutions, LLC
River Rouge, Michigan
Phone: (313) 843-0073



Total Precast Solutions, LLC
Fairfield, OH
Phone: (513) 829-1555



St. Louis Prestress, Inc.
Phone: (618) 656-8934
Web: www.stlprestress.com



**SEQUATCHIE
CONCRETE
SERVICE**

Sequatchie Concrete Service
South Pittsburg, TN
Phone: (423) 867-4510
Web: www.seqconcrete.com



Sidley Precast Group
Thompson, OH
Phone: (800) 536-3232
Web: www.sidleyprecast.com

Sidley Precast Group
Youngwood, PA
Phone: (800) 745-6546



Stress Con Industries, Inc.
Detroit, MI
Phone: (313) 873-4711
www.stressconindustries.com

Stress Con Industries, Inc.
Saginaw, MI
Phone: (989) 755-4348

Nucon Schokbeton
Kalamazoo, MI
Phone: (269) 381-1550



Strescore Inc.
South Bend, IN
Phone: (574) 233-1117
Web: www.strescore.com



United Precast
Mt. Vernon, OH
Phone: (740) 393-1121
Web: www.unitedprecast.net

Turtle Creek Casino & Hotel

Traverse City, Michigan

Turtle Creek Casino & Hotel in Traverse City Michigan utilizes a precast truss system that has been used on only a handful of construction projects in the United States. The truss system reduces column penetrations and provides column free space on alternating floors. Turtle Creek utilizes 14 precast trusses, 34 precast columns, 39 precast beams, 78,900 square feet of hollowcore, and 21,000 square feet of solid precast panels for stair and elevator shafts.

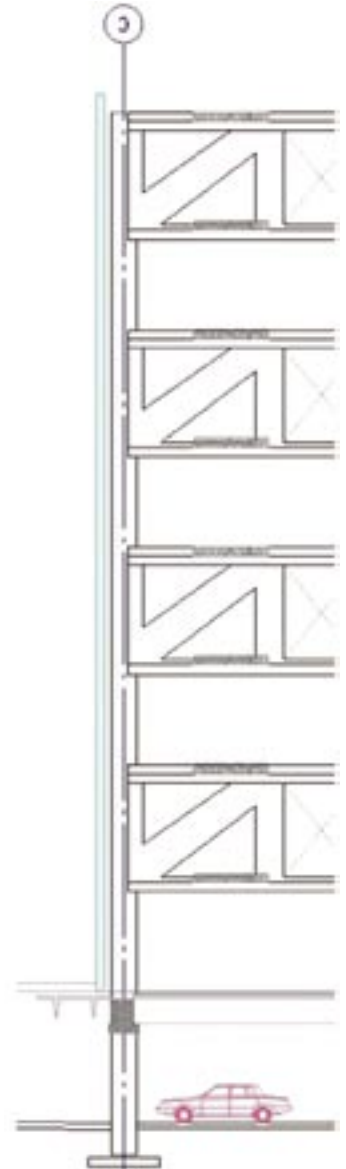
The building was originally designed as a poured in place building, however when precast entered the picture it was quickly realized that time and money could be saved by utilizing precast rather than poured in place. By using precast the owner and contractor were able to save over 4 months of construction time! Precast was able to begin erecting in winter conditions when poured in place would have had to wait until much later.

“By fabricating the structure off site, it gave us more time to design and install the foundations prior to having to start on the vertical structure. Also, since we would have been pouring concrete vertically in the middle of winter, it adds to the cost of the concrete and precast ended up being more economical.”

Bart Bodway, PCL Construction



www.kerkstra.com
(800) 434-5830





Motor City Casino Hotel

Detroit, Michigan

The third to fifteenth floors of the new Motor City Casino Hotel each consist of approximately 15,500 square feet of 10" hollowcore plank and 3,600 square feet of 10" solid slabs.

The structure is a combined system of structural columns, trusses, and precast planks. The precast planks were utilized to stabilize the columns and to act as a diaphragm for each floor.

Approximately 4,000 square feet of hollowcore were shipped to the job site per day, resulting in the structure being completely installed in fourteen weeks.

"The use of precast helped to stabilize the structure by tiering trusses together, which created a safe working platform as steel was erected. Keeping the same crew for steel and precast erection allowed better control over the site and eliminated unnecessary coordination and delays."

Robert Rea, Metro Steel Fabricators Inc.

THE PRESTRESSED GROUP
www.psi-hci.com (313) 962-9189

IPS International
Precast
Solutions, LLC

PSI Prestressed
Systems,
Inc.

TDS
TOTAL PRECAST SOLUTIONS, LLC

Precaster: Total Precast Solutions, LLC

Architect and Engineer: Giffels, Inc.

www.pcicentral.org/precaster
Additions, Corrections,
New Address, Deletions

Mailing List Updates



PCI Central Region
Chapter of PCI
9626 Upper Lewisburg Salem Road
Brookville, Ohio 45309

PRESORT STD
U.S. POSTAGE
PAID
DAYTON, OHIO
PERMIT NO. 422